

# Mangotsfield Road

## MANGOTSFIELD

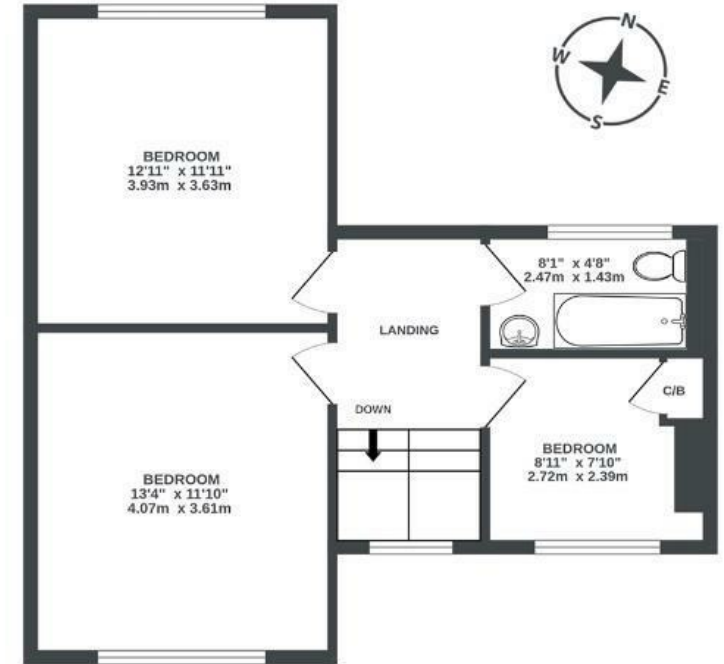
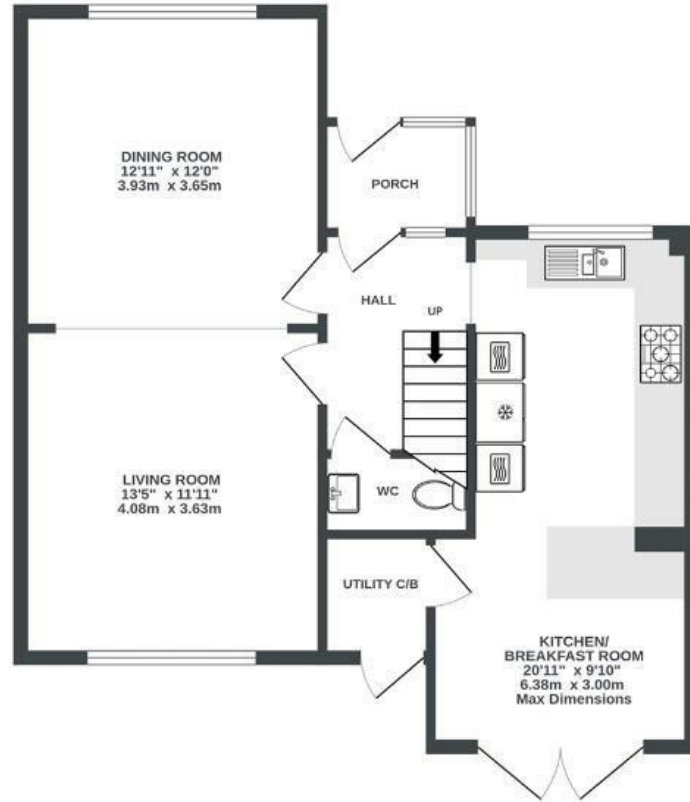
APPROXIMATE FLOOR AREA  
104.9 SQM / 1129 SQFT



GARAGE (NOT IN SITU)  
0 sq.ft. (0.0 sq.m.) approx.

GROUND FLOOR  
630 sq.ft. (58.5 sq.m.) approx.

1ST FLOOR  
500 sq.ft. (46.4 sq.m.) approx.



Illustrations are for reference purposes only, measurements are approximate, not to scale.

Boardwalk

# Mangotsfield

## MANGOTSFIELD, BRISTOL

---

£

£425,000



BS16 9JG

zZz

3 Bedrooms



1 Bathrooms

---

*"The views out of the window, especially at sunset, with the tress framing the view never fails to give you a sense of calm. Spending time in the garden, surrounded by mature trees makes you feel like you are in your own secret garden but once you leave the house you can walk to Staple Hill High Street or Emerson's Green village in fifteen minutes!"*

